



ROWLEY HALL RENOVATION

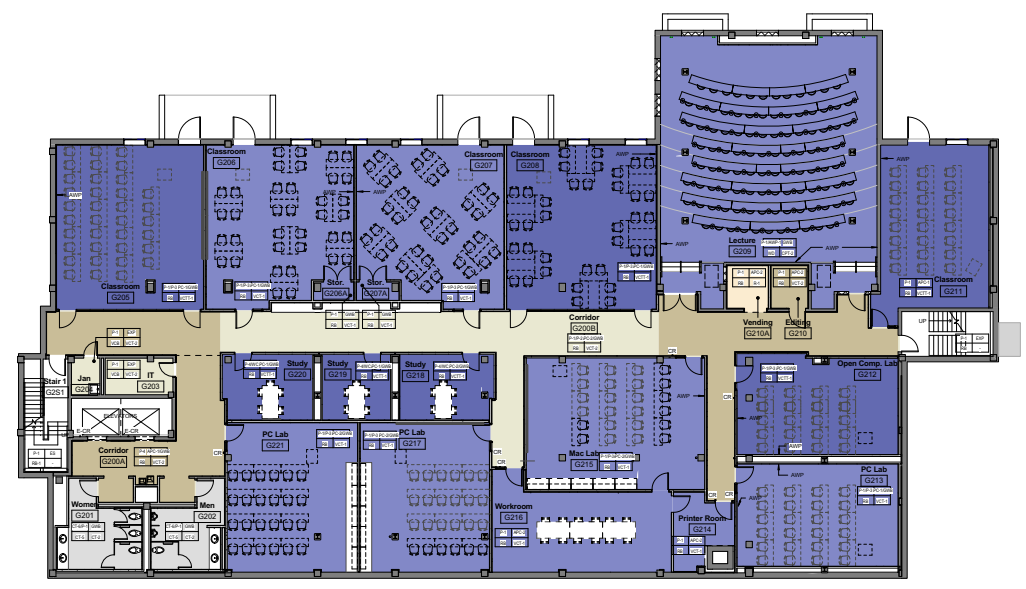
ARCHITECT
 AYERS SAINT GROSS
 1405 HAY STREET, SUITE 100
 BALTIMORE, MD 21202
 P: 410.547.8519

CIVIL ENGINEER
 CIVIL AND ENGINEERING
 600 ENGINEERING DRIVE
 SUITE 200
 ROCKFORD, VA 22152
 P: 703.442.3000
 F: 703.761.2787

STRUCTURAL ENGINEER
 ROBERT CRAMER AND ASSOCIATES
 1025 147 STREET, NE
 WASHINGTON, DC 20007
 P: 202.333.0200
 F: 202.333.2615

MECHANICAL ENGINEER
 FIRM ENGINEERING
 1202 NORTH FALCON DR
 SUITE 300
 ANNANDALE, VA 22001
 P: 703.525.5200
 F: 703.525.5289

ACoustical CONSULTANT
 THE SULLIVAN GROUP
 SUITE 405
 877 MARKET ST
 PITTSBURGH, PA 15212
 P: 412.323.8200
 F: 412.323.8208



- FLOOR FINISH LEGEND**
- GPT-2
 - GPT-3
 - GPT-4
 - CT-1
 - CT-2
 - VCTT-1
 - CT-1VCTT-2
 - VCTT-3
 - VCTT-4
 - VCT-1
 - VCT-2
 - VCT-3
 - R-1
 - SC

1 Level G2 Finish Plan
 1/8" = 1'-0"



2 LEVEL G2 CORRIDOR VIEW BY ELEVATOR



3 LEVEL G2 CORRIDOR VIEW BY LECTURE HALL



4 LEVEL G1 CORRIDOR VIEW BY ELEVATOR



5 LEVEL G1 CORRIDOR VIEW BY LECTURE HALL

Number	Date	Revision



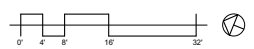
ARCHITECTS + PLANNERS
 1405 HAY STREET, SUITE 100
 BALTIMORE, MD 21202
 Phone: 410.547.8500
 Fax: 410.547.8519

Client Presentation

Date	December 21, 2011
Scale	1/8" = 1'-0"
Job No.	21118.00

Level G2 Colored Finish Plan
Drawing No. A8.00A

© COPYRIGHT AYERS-SAINTEGROSS 2011



LEVEL G2: FINISH PLAN